

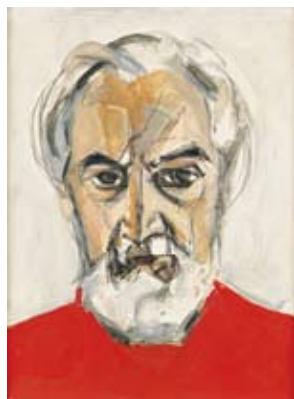
Works

Born in Ronda in the crucial year of 1898, Joaquín Peinado was the successor of Cézanne, the spiritual son of Picasso and the most elegant member of the “Spanish School” of Paris, a group of artists that opened the door to vanguard art without losing their roots. He was able to capture the secret geometry of objects and the intimate colours with which the world reveals itself to those who are able to sit back and see it in peace.

Joaquín Peinado, a simple native of small town Ronda, would eventually end up becoming one of the many world renowned figures to come out of Andalusia. He borrowed the elements from the aesthetic canons of his time which resonated with his own

personal temperament, which was both passionate and artistically rigorous. His career was marked by a desire to capture the evident mysteries in objective reality, which he succeeded in reducing to its quintessential nature.

He outlined the objects he portrayed, tracing over their contour lines to call our attention to their own identity, to free them of devouring space and to make them immortal. In his works, the sensualism provided by his birthplace of Ronda is always subordinate to the rigor imposed by a rationality that obliged him to see beyond the immediate and into the depths of existence. It therefore comes as no surprise that the paintings of Joaquín Peinado have been compared to the art of bullfighting in Ronda – halfway between the magical enchantment of Seville and the stoic temperance of Cordoba.



Self-portrait
c. 1972,
oil on canvas, 35 x 27 cm

Urban Landscape
1955,
oil on canvas, 114 x 146,5 cm



Still life
1925,
oil on canvas, 81 x 65 cm



Industrial Landscape
1959, oil on canvas,
73 x 92 cm

Nude Lying Down
1968, oil on canvas,
89 x 116,5 cm



Landscape with Castle
1929,
oil on canvas, 92 x 73 cm



Portrait of a Seated Woman
1961, oil on canvas,
130,5 x 97 cm



Don Quixote of La Mancha
1947,
oil on canvas, 81 x 61 cm

mp [museo joaquín peinado]

Hours

Monday to Friday
10:00 a.m. to 6:00 p.m. (winter)
10:00 a.m. to 7:00 p.m. (summer)
Saturdays, Sundays and Holidays:
10:00 a.m. to 3:00 p.m.

Prices

Individual: 4 € / Groups: 2 €
Reduced: 1 € (students and over 65)
Free entrance: children under 14 and residents of Ronda

General Services

Guided Visits (must be booked previously)
Screening Room (educational audiovisuals)
Educational Guide / Gift Shop

Rules of Entrance

No photographs or videos may be taken. Visitors may not enter with bags or luggage of any kind.



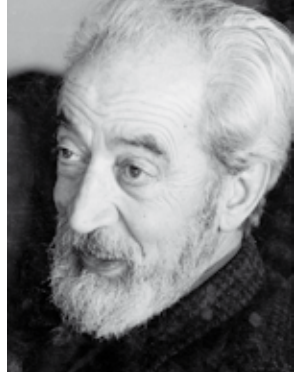
Address

Plaza del Gigante s/n
29400 Ronda (Málaga) Spain
Tel. +34 952 87 15 85
www.museojoaquinpeinado.com
www.obrasocialunicaja.es



Permanent Collection
English

mp
[museo
joaquín
peinado]



Joaquín Peinado
in the 1970's

The Museum

The Unicaja Ronda Foundation chose to place the Peinado Museum in a traditional noble building known as the Moctezuma Palace, whose size and structure provide an ideal setting for exhibiting the works of Ronda native Joaquín Peinado. The museum invites visitors to admire the painter's works, starting from 1923, the year Peinado left for Paris, and continuing until 1974, just a few months before he died. The exhibit therefore covers practically all of his evolution as a painter and

show examples of all the techniques he used over the course of his painting career.

The Palace features two courtyards: one maintains a very classical atmosphere and is adorned with Tuscan columns over high stone pedestals; the other has an overhanging roof on one side which is held up by slender columns of the same kind of stone.

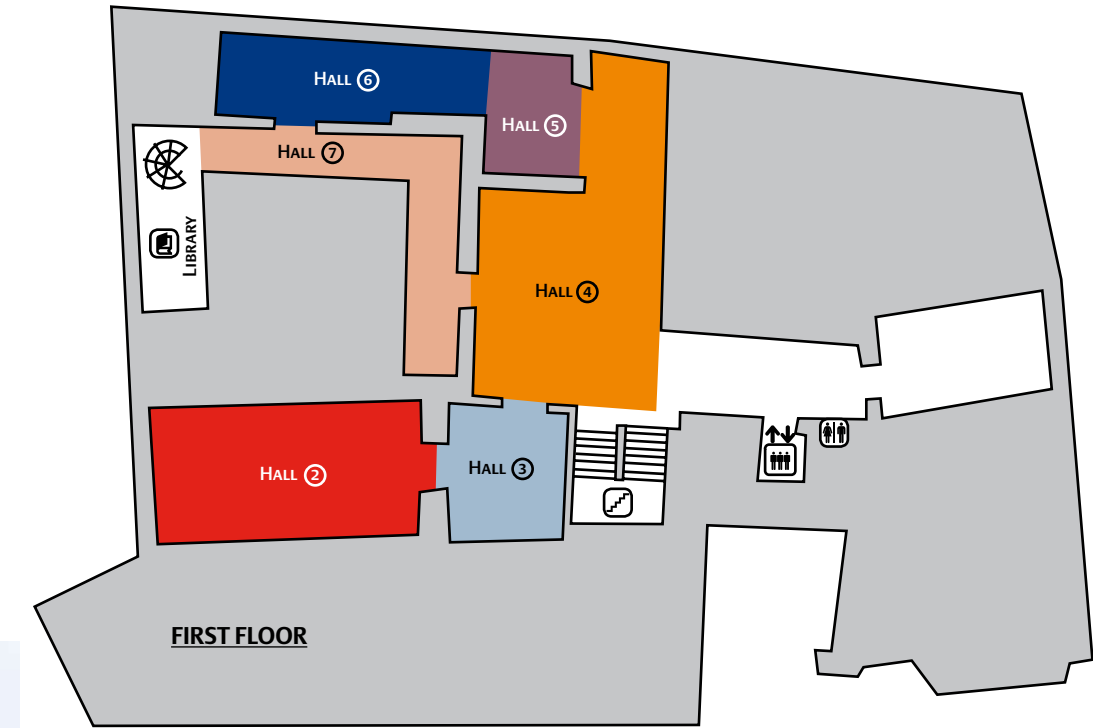
Strolling down the halls of the Peinado Museum in Ronda is a delight, as visitors

are invited to contemplate key pieces of his work and paintings which are exponents of 20th century art history. The exhibit also includes a series of drawings taken from Peinado's own private folders which he took with him throughout his life and never wanted to let go of, revealing a work of vibrant intimacy which blend the mastery and refinement which are so typical of Peinado.

The challenges of assembling this collection, which could only be housed

in Peinado's birthplace of Ronda, have proved to be enormous; however, the Unicaja Ronda Foundation has taken on these challenges with great dedication and pleasure and is now delighted to share the results with the town of Ronda and all humanity.

Museum Map



Recommended Visit

- **HALL 1:** *Life*
- **HALL 2:** *Mudejar Hall. Joaquín Peinado and Spanish artistic renewal in the 20th century*
- **HALL 3:** *The 1920's: New realisms, Neo-Cubism and Narrative Figuration*
- **HALL 4:** *The 1940's: His encounter with the objects*
- **HALL 5:** *The 1950's: The geometric abstraction*
- **HALL 6:** *The 1950's: Pro-Form Art*
- **HALL 7:** *Nudes and Erotic Series*
- **HALL 8:** *The 1960's and 70's*
- **HALL 9:** *Graphic works, Water Colours and Drawings*

